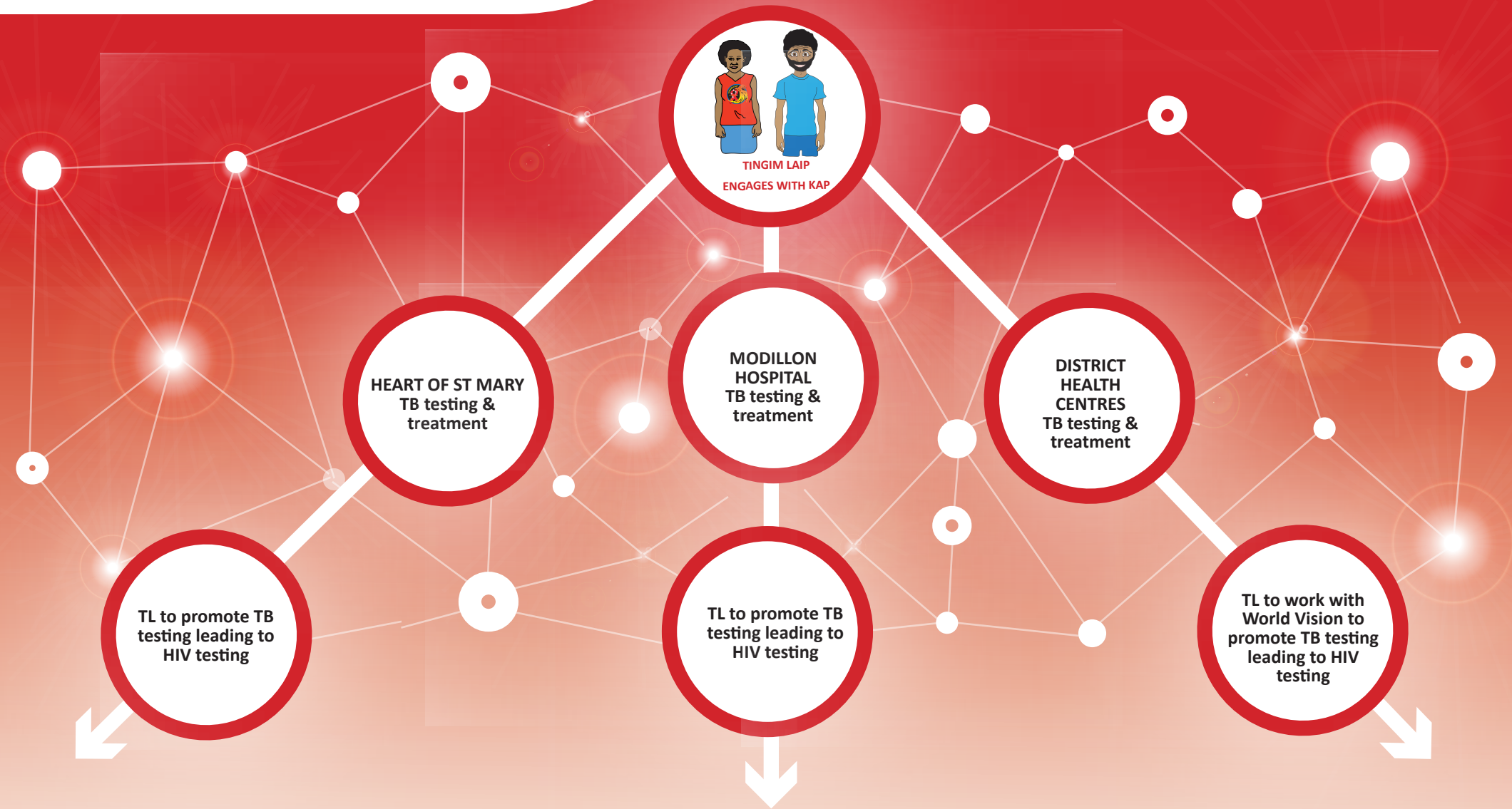




MADANG TB SERVICE PATHWAYS

With Heart of St. Mary, Modillon Hospital, District HC's and World Vision as priority partners



- CONTACT AT HEART OF ST MARY, W: 423 3147
- CONTACT AT MODILLON HOSPITAL, W: 422 2022, F: 422 3065
- CONTACT AT WORLD VISION, W: 422 1959